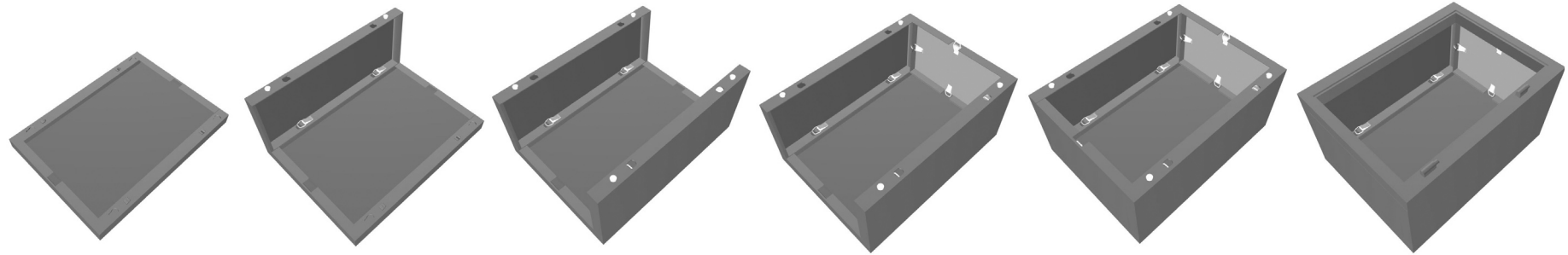
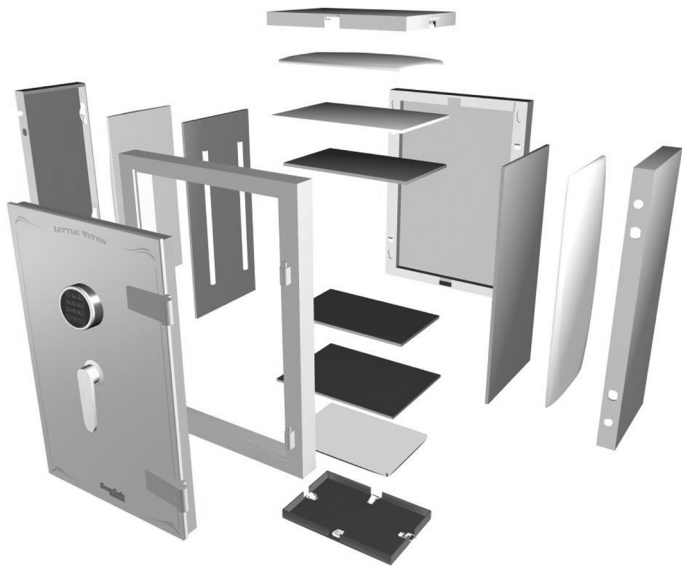


SnapSafe Little Titan Assembly

- 1. Unpack all parts and lay them out.**
- 2. Lift the DOOR off of the DOOR FRAME.**
- 3. The Little Titan is built to tight tolerances. You may need a persuader to “seat” some pieces.**
- 4. Do not mistake the white blankets marked “FIRE SHIELD” for packing material.**
They must be in the walls of the vault.
- 5. The back interior liner panel “hangs” on brackets. It may have become detached in transit.**
Be sure to center it onto the brackets prior to assembly.
- 6. Lay Part 1 (*Outside Back*) flat and Assemble parts #1 – #18 in order.**
- 7. Do not latch the latches until all the metal exterior pieces are assembled.**
- 8. Each part is marked with an assembly instruction. Note each part’s orientation.**
TOP – BOTTOM – FRONT etc. on each part refers to its position in the assembled vault.
LEFT and RIGHT are as you face the front of the vault.
- 9. The Bottom Liner is the last piece in the assembly. When fitting the Bottom Liner into the safe, insert it through the doorframe at an angle. Then slide the front edge under the lower lip of the doorframe before dropping the back edge down into position.**
(note: Top Liner is larger than bottom liner)



For all Customer Service questions call toll free: **1-877-214-4470**
Visit us at **www.snapsafe.com**



BACK

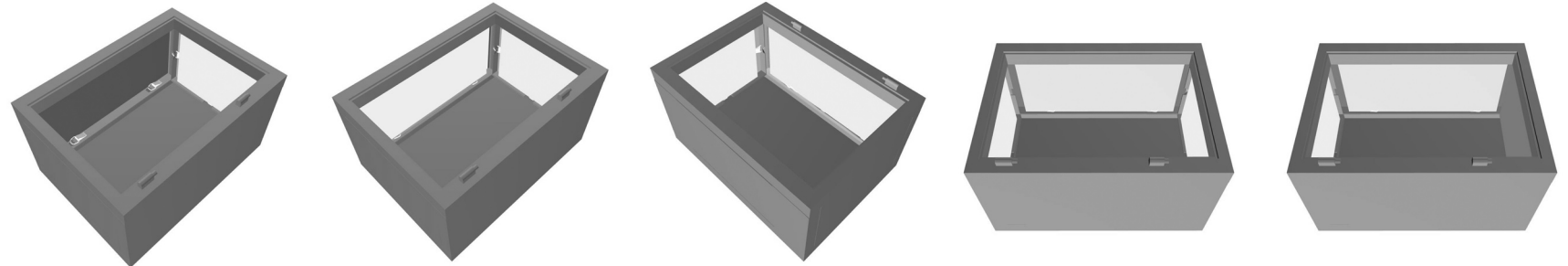
LEFT SIDE

RIGHT SIDE

TOP

BOTTOM

DOOR FRAME



TOP FIRE SHIELD

LEFT FIRE SHIELD

RIGHT FIRE SHIELD

BOTTOM FIRE SHIELD

TOP LINER



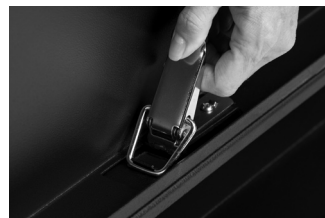
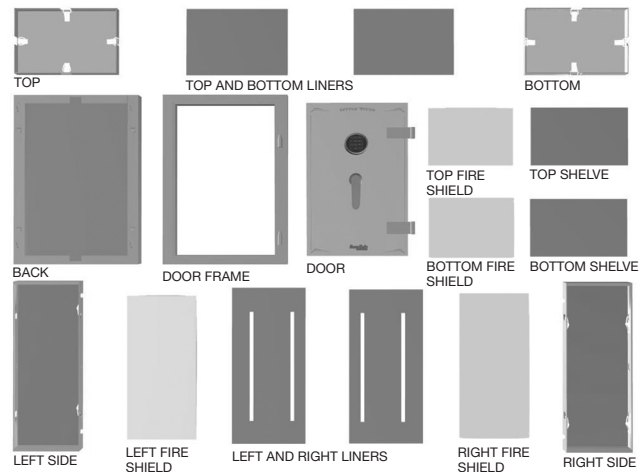
LEFT SIDE LINER

RIGHT SIDE LINER

BOTTOM LINER

SHELVES

DOOR



Latches secure BACK, SIDES, TOP, BOTTOM and DOOR FRAME in minutes.



SnapSafeTM
What's Yours - Stays Yours

For all Customer Service questions call toll free: **1-877-214-4470**
 Visit us at **www.snapsafe.com**