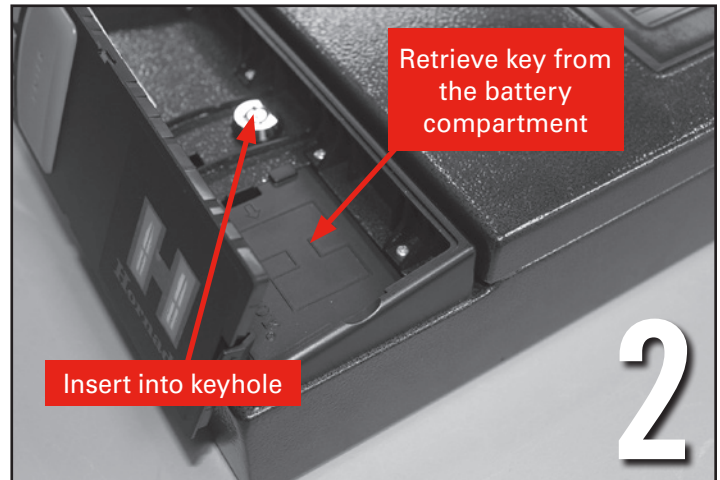
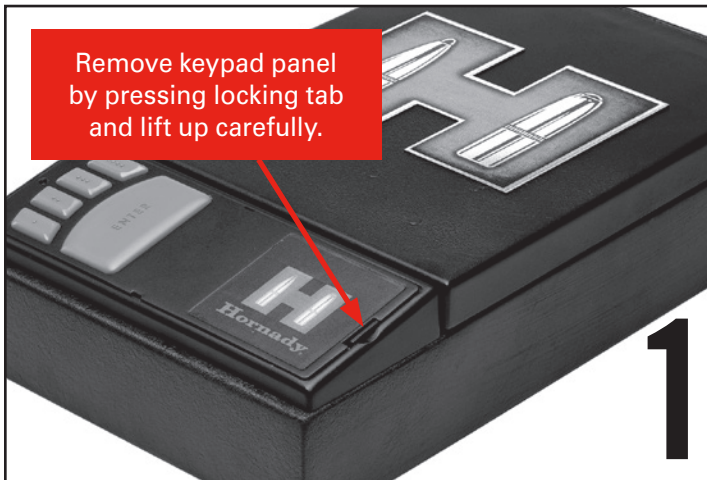


First Use Instructions

IMPORTANT! READ THIS

To use your RAPiD™ Safe for the first time, follow these steps:



NOTE:

NEVER close the safe until the latch motor has returned to home position (As shown. May take 1-2 seconds).



NEED HELP?

Let us help you directly – please do not contact your retailer.

1. Please make sure you have read the Instruction Manual completely.
2. If you can't find a solution in the Instruction Manual, please visit www.hornady.com for any additional instructions and FAQs.
3. If you need personal assistance, please contact our Tech Dept.
1-800-338-3220 (M-TH 8AM-5PM / F 8AM – 4:30PM Central time)
or email tech@hornady.com

We promise you will talk to a real, live person; a shooter, hunter and gun owner just like you who will do whatever they can to help you!

