

# V-Line Narcotics Security Box with the CompX 150 Series eLock



## Operating Instruction Manual

Thank you for purchasing the V-Line Narcotics Security Box Model No. 1499 with the CompX 150 Series eLock. The information contained in these instructions is intended to serve as a guide to allow the eLock to be quickly and easily put into service.

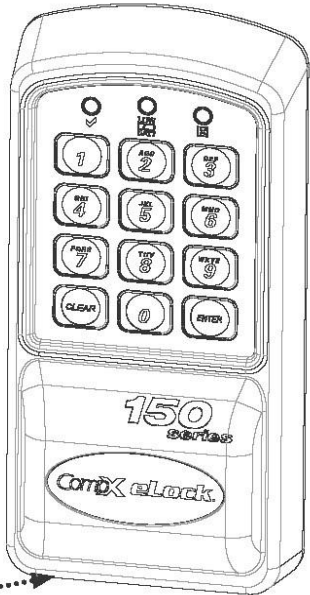


### eLock controller

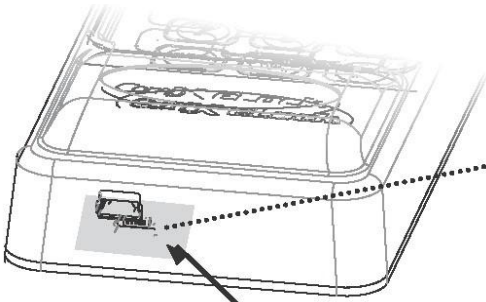
1. Alpha-numeric keypad
2. "ENTER" button
3. "CLEAR" button
4. HID Prox or HID iCLASS reader location (if equipped)
5. Low battery indicator (yellow LED)
6. Green LED
7. Red LED



# V-Line Narcotics Security Box with the CompX 150 Series eLock

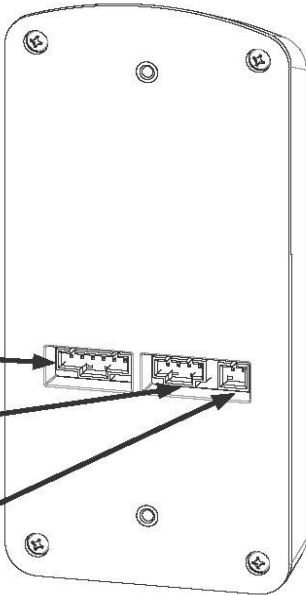


**Front view: eLock controller**



USB Port for direct connection to LockView software

**Back view: eLock controller**



Latch cable connector

Battery compartment cable connector

Door switch cable connector (optional)

# V-Line Narcotics Security Box with the CompX 150 Series eLock

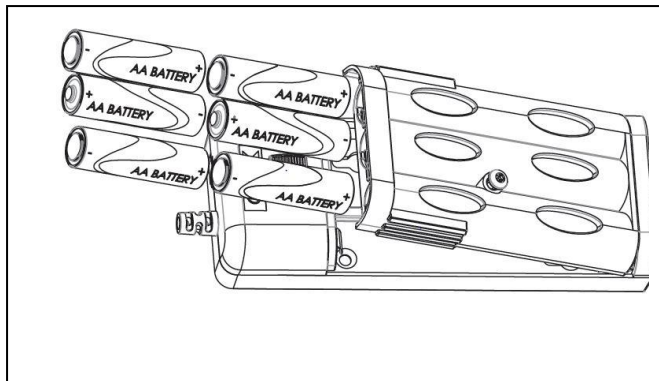


## Unit Features

- Each eLock can hold any combination of up to 250 Supervisors and Users.
- Certain models can use HID Prox or HID iClass credentials that can be programmed to operate each eLock.
- Spring bolt latching mechanism provides automatic relocking.
- Membrane keypad provides durable performance and easy cleaning.
- Audit trail capability of up to 1500 events with the optional LockView v5 software.

## Care and Cleaning

The eLock is a battery operated device, therefore, it should be part of a regular battery maintenance program.



Warning: install the batteries as shown in the battery compartment. Polarity (+) or (-) must be correct. Replace batteries as a set. Always use new batteries when replacing the old set. Do not combine a used battery with a new one. Only use premium alkaline batteries; do not mix battery types.

To clean the surface of the eLock controller, apply non-acid based cleaner to a clean cotton cloth; do not spray cleaner directly on the controller. Wipe down keypad and housing taking care around the beeper opening and edges of keypads. Wipe excess cleaner off of all surfaces.

# V-Line Narcotics Security Box with the CompX 150 Series eLock



## **GETTING STARTED**

The eLock is shipped with no PIN or if equipped card credentials.

There are 2 levels of credential: User / Supervisor.

Only a Supervisor credential(s) is allowed to manual program.

**Note:** Green LED on reader will flash upon presenting a valid Supervisor level credential, whereas a solid green LED upon presenting a User level credential.

### **INITIAL PROGRAMMING OUT OF THE BOX or AFTER A FACTORY RESET HAS BEEN PERFORMED**

**(See page 5 for FACTORY RESET  
instructions)**

1. Press and hold "ENTER" until the beeping stops.
2. Enter PIN (4 to 14 digits) and press "ENTER" or present card (if equipped).

This PIN / card is now a Supervisor level credential occupying slot 001.

The maximum number of slots per eLock is 250.

#### **TO ADD A USER**

1. Input a valid Supervisor PIN and press "ENTER" or present valid Supervisor card.
2. Press and hold "ENTER" until beeping stops.
3. Input the new User PIN and press "ENTER" or present new User card.

#### **TO ADD A SUPERVISOR**

1. Input a valid Supervisor PIN and press "ENTER" or present valid Supervisor card.
2. Press and hold "ENTER" until beeping stops.
3. Press and hold "ENTER" again until beeping stops.
4. Input new Supervisor PIN and press "ENTER" or present NEW Supervisor card.

#### **TO DELETE A USER OR SUPERVISOR**

1. Input a valid Supervisor PIN and press "ENTER" or present valid Supervisor card.
2. Press and hold "CLEAR" until beeping stops.
3. Input the PIN to be deleted and press "ENTER" or present existing card to be deleted.

#### **TO ADD A USER WITH A SPECIFIC SLOT ASSIGNMENT**

1. Input a valid Supervisor PIN and press "ENTER" or present valid Supervisor card.
2. Press and hold "ENTER" until beeping stops.
3. Enter slot number that will be assigned to user and press.  
(Example: to program slot 18 type 018)
4. Input the new PIN (4 digit min) and press "ENTER" or present NEW card.

#### **TO DELETE A USER WITH A SPECIFIC SLOT ASSIGNMENT**

1. Input a valid Supervisor PIN and press "ENTER" or present valid Supervisor card.
2. Press and hold "CLEAR" until beeping stops.
3. Enter slot number to be cleared and press "ENTER" (example: to clear slot 6 type 006).
4. Enter slot number to be cleared again and press "ENTER" (example: to clear slot 6 type 006).

# V-Line Narcotics Security Box with the CompX 150 Series eLock



## **OPERATION INSTRUCTIONS**

Follow the below instructions to open the eLock.

**KEYPAD:** Enter in a valid PIN (4 to 14 digits) and press "ENTER".

**CARD:** If the eLock is also equipped with a card reader (HID Prox or HID iCLASS), present a valid card.

**DUAL CREDENTIAL:** If the valid Supervisor/User is a dual credential (programmable only in LockView) enter the first credential (PIN or card) and then enter the second credential (PIN) and press "ENTER". Note the second credential must be a 4 to 14 digit PIN.

The latch bolt will extend automatically after the factory default time or custom programmed time as set in LockView has expired - press "CLEAR" to extend bolt immediately.

**LOW BATTERY:** Low battery light (LOW BATT) will illuminate.

**SETUP MODE:** Required to allow the eLock to be added to LockView software and to perform a FACTORY RESET. Press and hold "CLEAR" until the audible beeping stops. Enter the SETUP CODE (Setup Cd) and press "ENTER". See green sticker set for setup code.

### **FACTORY RESET**

**WARNING: FACTORY RESET will delete all previously programmed credentials**

With the eLock in SETUP MODE, while pressing and holding "CLEAR", press and continue to hold "8" and then press "6". The eLock will make a short series of audible major tones and the green LED will blink continuously. Programming can begin again as if the eLock was "OUT OF THE BOX".

## Methods to begin building a database of eLocks in CompX's LockView Software

**Note:** Supervisor, User and parameter changes that already exist in the eLock will automatically be carried into LockView once the eLock has been enrolled.

### LockViewMode Instructions

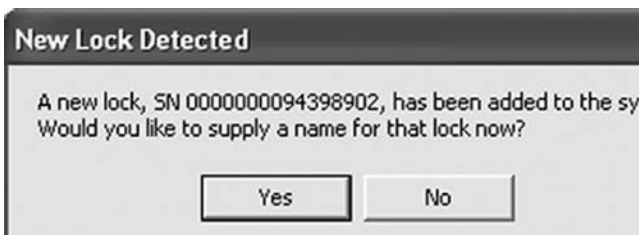
(For complete details on how to build a database of users and eLocks, see the *CompX LockView Software Instruction Manual* and *CompX eLock Manual Programming Guide*)

CompX LockView Software v5 must be installed and the eLock must be in **SETUP** mode before continuing.

**Stand-alone eLocks (Direct USB connection to laptop computer with LockView is required)** There are two methods that can be used to add eLocks to the LockView software.

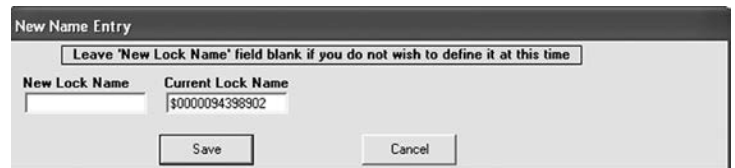
#### Automatic METHOD

1. With the eLock in **SETUP** mode, connect the eLock via the USB cable to the computer on which LockView is installed.
2. Login to LockView.
3. After 30 seconds, the below will appear.



**NOTE:** After 5 minutes of inactivity, the eLock will exit **SETUP** mode.

4. Click **Yes**.
5. The below will appear. Type in the name of the lock.



6. Click **Save** when done.
7. Go to **Lock Editor** tab in **Lock/User Editor**.
8. Left click to highlight the name of the lock and then click **Edit Lock**.
9. Verify and/or adjust all other lock parameters. (See **LockView Instruction Manual** for complete details.)
10. Click **OK** when done.

#### Manual Method

1. Login to LockView.
2. Go to **Lock/User Editor; Lock Editor** tab and click **Add Lock**.
3. Enter the required information: **Lock Name; Lock Serial Number** and **Setup Code** (supplied on green sticker set as Setup Cd).
4. Verify and/or adjust all other lock parameters and click **OK**. (See **LockView Instruction Manual** for complete details on these options)
5. With the eLock in **SETUP** mode, connect the eLock via the USB cable to the computer on which LockView is installed.
6. After 30 seconds, the lock will be updated in LockView. Click **Refresh** to prompt the update.

**NOTE:** After 5 minutes of inactivity, the eLock will exit **SETUP** mode.

# V-Line Narcotics Security Box with the CompX 150 Series eLock



## Accessories



**LockView Software Kit**  
(Includes 1 LockView travel drive, 1USB cable)  
  
Part Number: **LockView-5PRO**

- Lock View Software**
- Add, edit, view and delete users / supervisors and their credentials
  - Add, edit and delete CompX eLocks®
  - Assign access rights between users / supervisors and CompX eLocks® in the database
  - Download, view, save, print, archive and delete audit trails
  - Dual credential access available
  - Set real time clock
  - Time based access restrictions
  - Create user groups
  - Windows™ based

Item	Part No.	Description
12v-9V eLock DC Power Converter	150-DC12v	Hard wire the NSB directly to 12v vehicle battery
150 Series 9v AC Power Adapter	150-AC9V	Allows NSB to be plugged into AC outlet
Annual Service Contract	33911000000	Updates software and provides tech support for locks after 90 days

Call for quotes on accessories