



# ULTIMATE ACCESS RACK

## MODEL R-SOR13

### INSTALL INSTRUCTIONS

The R-SOR13 Ultimate Access Rack is approved for the following products:



**KODIAK**

UAK19ES  
K5940EX & KSB5940EX  
K7136EX & KSB7136EX  
K7144EX



**RHINO SAFE**  
Co.

C6040X & CIW6040X  
C7242X & CIW7242X  
C7256X & CIW7256X  
A6042X & AIW6042X  
A7242X & AIW7242X  
A7256X & AIW7256X

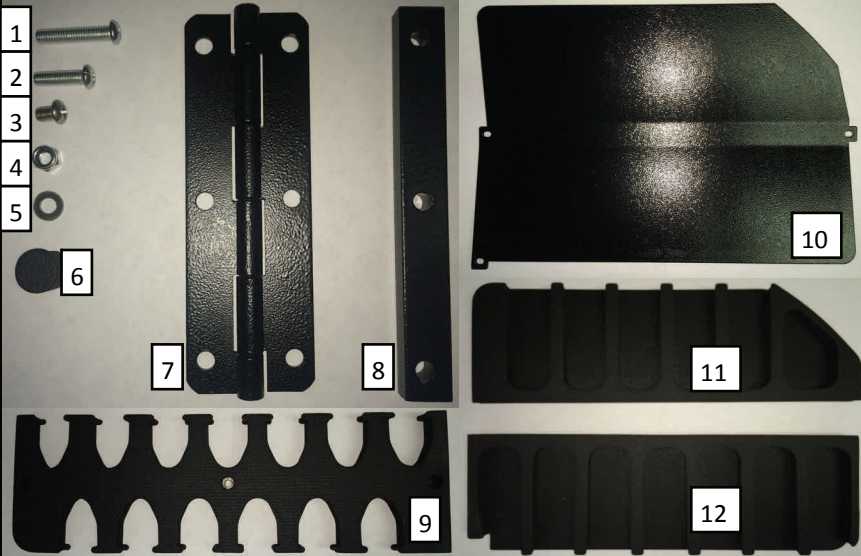


**BIGHORN**

UAB5933ECX  
UAB5940EX  
UAB7144EX

Read this manual before using this product. Failure to follow the instructions and safety precautions outlined in this manual can result in damage to safe, swing out panel, or items stored within the safe.

Parts in each Swing-Out Rack kit:



1	M6-1.0 x 30mm Bolt (x6)	5	M6 x 12mm OD Washer (x24)	9	Top Foam Barrel Rest (x1)		
2	M6-1.0 x 20mm (x12)	6	EVA Foam In-sert (x3)	10	Bottom Plate (x1)		
3	M6-1.0 x 10mm Bolt (x6)	7	Hinge (x2)	11	Rounded Foam Butt Rest (x1)		
4	M6-1.0 Nylock (x18)	8	Spacer (x2)	12	Foam Butt Rest (x1)	13	Body (x1)

Tools required for install:

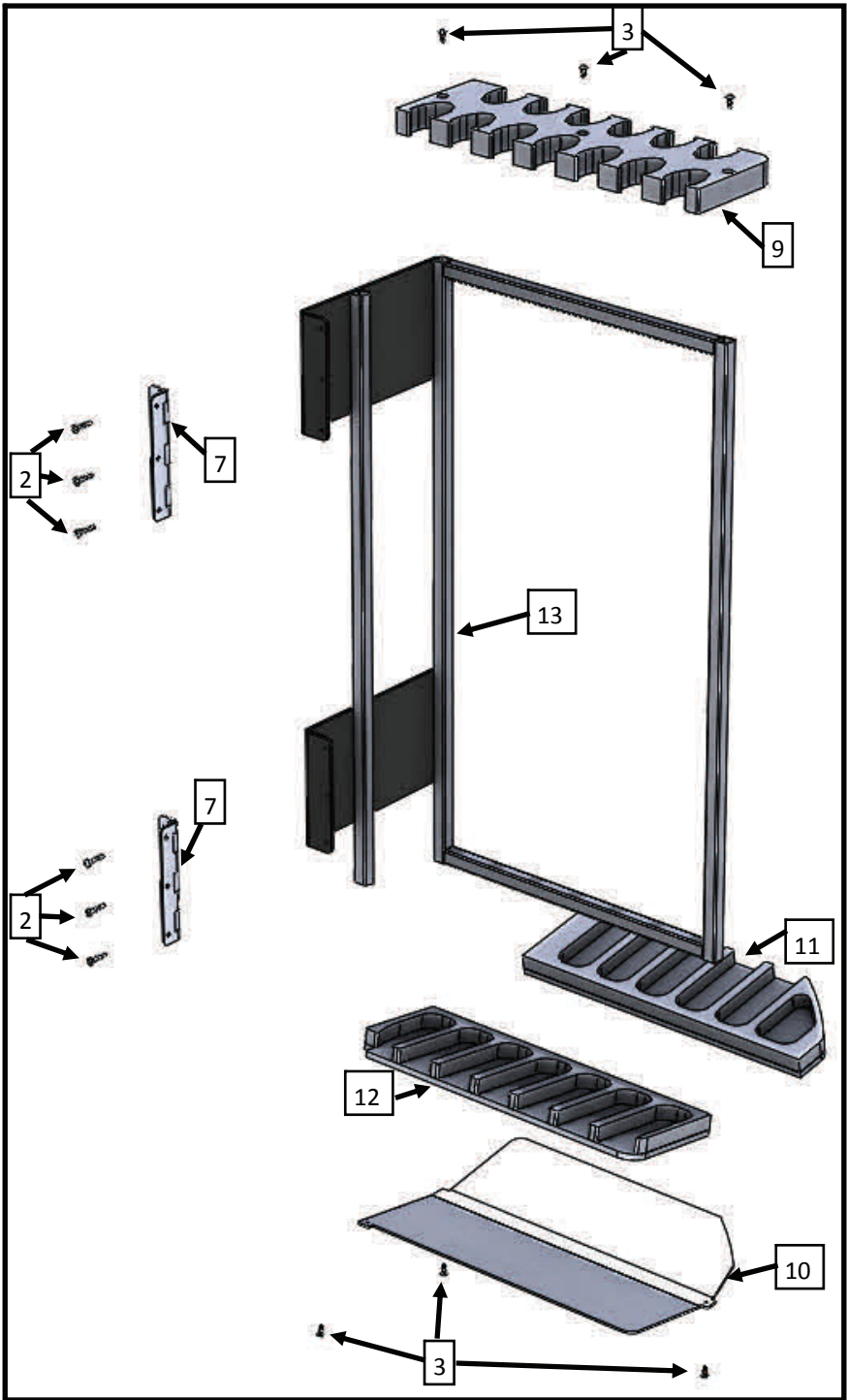
- Phillips head screwdriver
- 10mm open end wrench or socket wrench

**WARNING:** Installation of this product on any other model or brand (not listed on Page 1) is NOT APPROVED and is solely at the consumers risk. Installation of this product on non-approved models or brands may adversely affect or eliminate any manufacturers warranty, affect the operation of the product it is installed on and may create tipping hazards which could cause injury or death. Rhino Metals is not responsible for any claims arising out of the installation or attempted installation of this product on non-approved products.

For technical support, please call our toll free number:

**Toll Free: 208-454-5545 x.5844**

Rhino Metals, Inc.  
 607 Garber Street  
 Caldwell, ID 83605  
 208-459-0819 (FAX)  
[www.rhinosafe.com](http://www.rhinosafe.com)



### Step 1:

-Using 3x (#3 and #5), attach (#10) to the bottom of (#13) as seen in Figure 1.

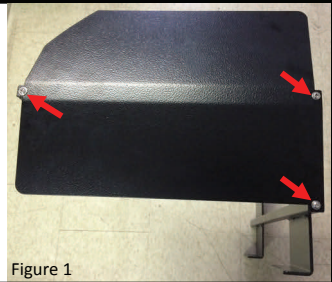


Figure 1

### Step 2:

-Using 6x (#2, #4 and #5), attach both (#7)'s to (#13) as shown in Figure 3. Match the bolt direction and hinge layout shown in Figure 2.

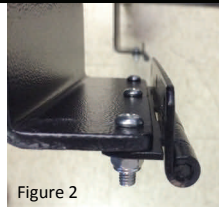


Figure 2

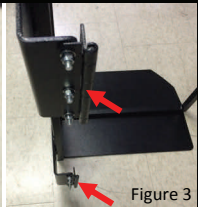


Figure 3

### Step 3:

-Using 6x (#2, #4 and #5), attach both (#7)'s to the body of the safe as shown in Figures 4 and 5. Attach top-most and bottom-most Bolts first, then the last 4.

**Note: 2 people are recommended for this step**



Figure 4



Figure 5

### Step 4:

-Peel off the backing from both pieces of tape on parts (#9 and #13). Then use 3x (#3 and #5) to attach (#9) to the top of (#13) as shown in Figure 6. Plug the holes with 3x (#6).

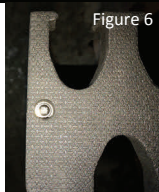


Figure 6

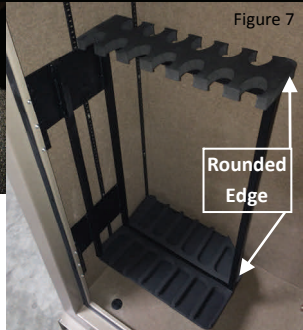


Figure 7

-Wipe off the top surface of (#10) with a dust cloth and remove the backing from the tape on the bottom of parts (#11 and #12). Place (#11 and #12) onto part (#10) firmly in the orientation seen in Figure 7.

### Notes:

- The rounded edge on part (#9) should be directly above the rounded edge on part (#11)
- Do not exceed the weight rating of 200lbs for the Swing-Out Rack
- Rhino Metals is not liable for damage caused by improper installation of Swing-Out Rack