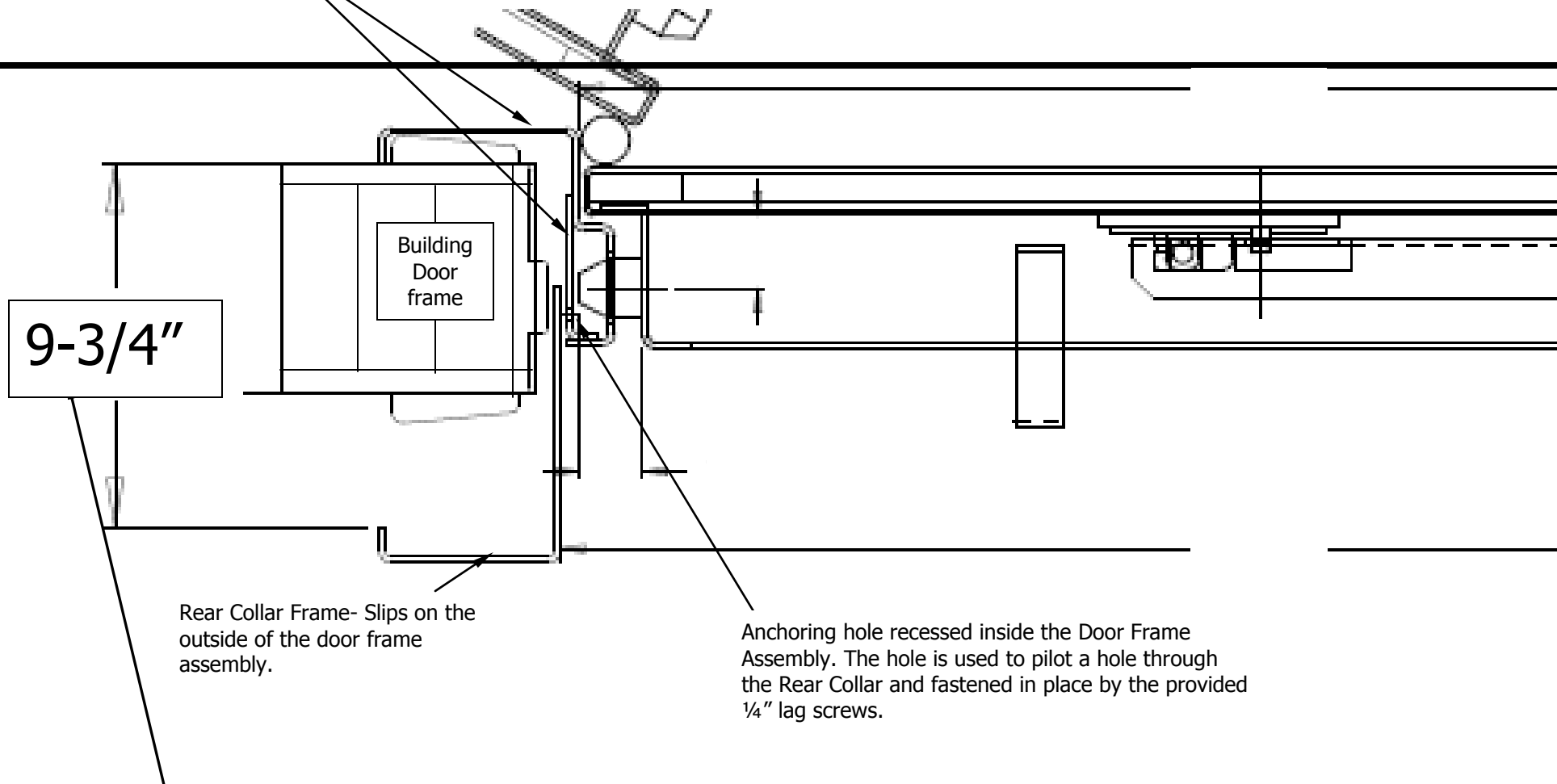


Vault Door Wall Cross Section – Frame / Collar Information  
VD8030/8036 SF & BF Models

Door frame assembly



9-3/4"

Rear Collar Frame- Slips on the outside of the door frame assembly.

Anchoring hole recessed inside the Door Frame Assembly. The hole is used to pilot a hole through the Rear Collar and fastened in place by the provided 1/4" lag screws.

**Absolute Max- 9-3/4" Wall Thickness**

Any more and there will not be enough material for the fasteners to pass through and secure the Collar Frame.